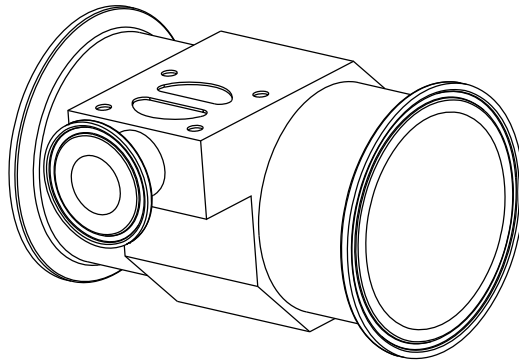
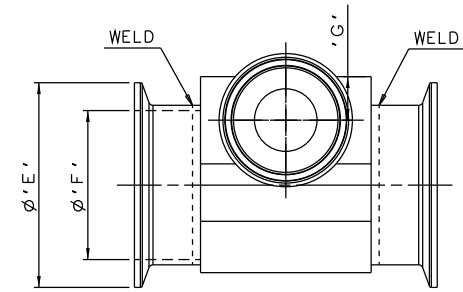
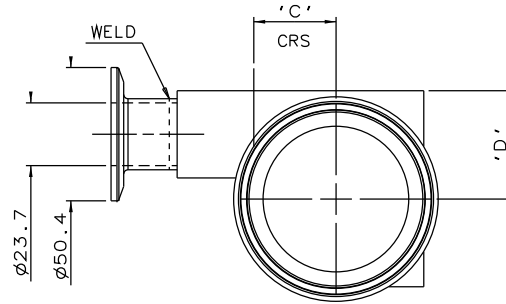
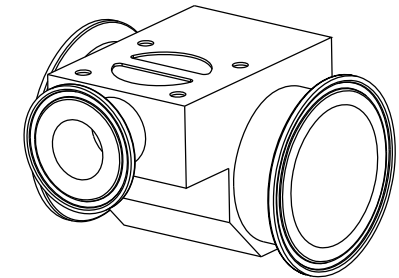
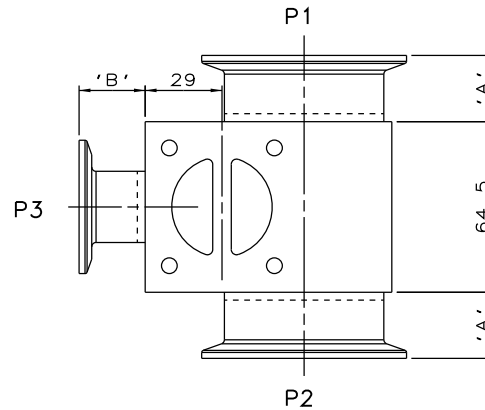


DN20 MAINLINE ONLY



DN65 TO DN100
MAINLINE ONLY



DN25 TO DN50
MAINLINE ONLY

The information on this sheet is Private and Confidential and is the property of Crane Process Flow Technologies Limited and must not be published directly or indirectly in any manner whatsoever without the written permission of the Company and must not be used in any way detrimental to their interests.
© Crane Process Flow Technologies

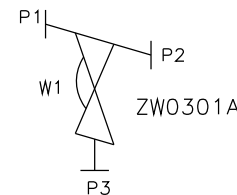
CRANE Process Flow Technologies
A Crane Co. Company

Saunders
The Science Inside

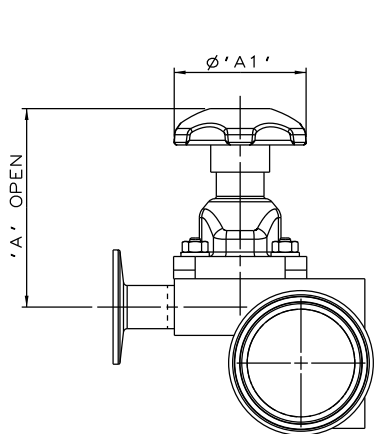
Title
SCHEDULE OF LEADING DIMENSIONS FOR DN20
WEIR 'T' BODY COMPLETE WITH :
MAINLINE : HYGIENIC CLAMP ENDS WITH ISO 1127 S1 BORE
BRANCH : DN20 HYGIENIC CLAMP END WITH ISO 1127 S1 BORE

Drawn RI	Date 07.02.12	UNCONTROLLED IN HARD COPY FORMAT	
Checked RND	Date 23.03.12	Drawing No.	Issue.
First Angle Projection Method E	DO NOT SCALE	WEB-123	1

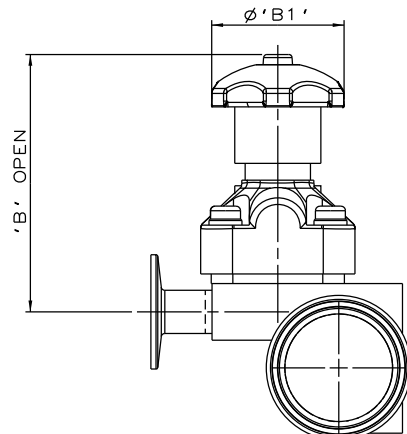
MAINLINE SIZE	A	B	C	D	ϕE	ϕF	G	BODY WEIGHT
mm	mm	mm	mm	mm	mm	mm	mm	Kgs
DN20	25.0	25.0	15.4	26.5	50.4	23.7	15.5	0.9
DN25	25.0	25.0	18.4	30.0	50.4	29.7	16.5	1.1
DN32	25.0	25.0	22.7	34.5	63.9	38.4	15.5	1.3
DN40	25.0	25.0	25.7	37.0	63.9	44.3	16.5	1.4
DN50	25.0	25.0	31.1	41.0	77.4	55.1	16.5	1.8
DN65	50.0	25.0	39.0	46.0	90.9	70.9	15.5	2.0
DN80	50.0	25.0	45.4	49.0	105.9	83.7	15.5	2.3
DN100	50.0	25.0	58.1	60.2	130.0	109.1	15.5	2.8



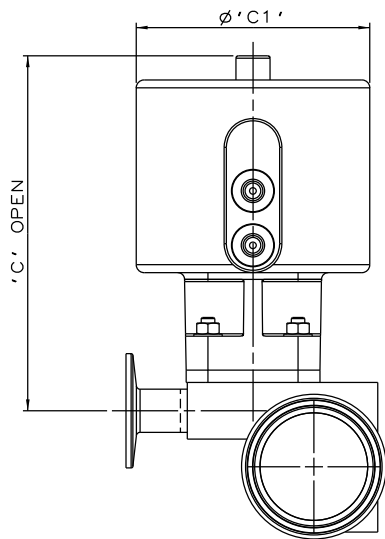
ORIENTATION AS PER
P&ID DIAGRAM FOR
OPTIMUM DRAINABILITY.



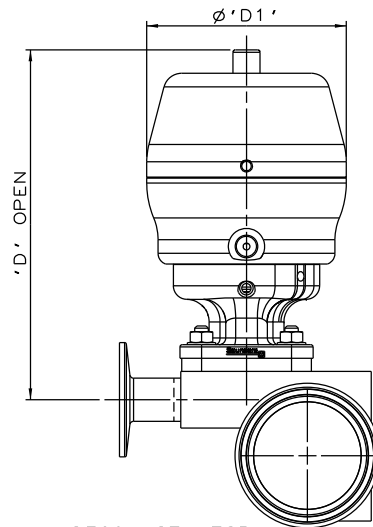
SS NON SEALED
BONNET ASSEMBLY



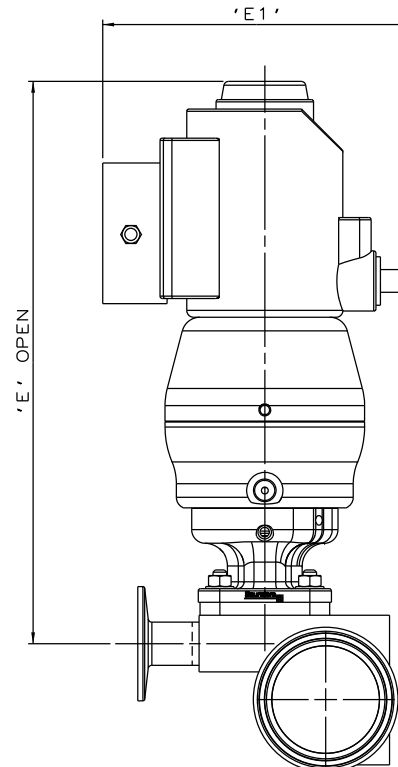
PES BONNET
ASSEMBLY



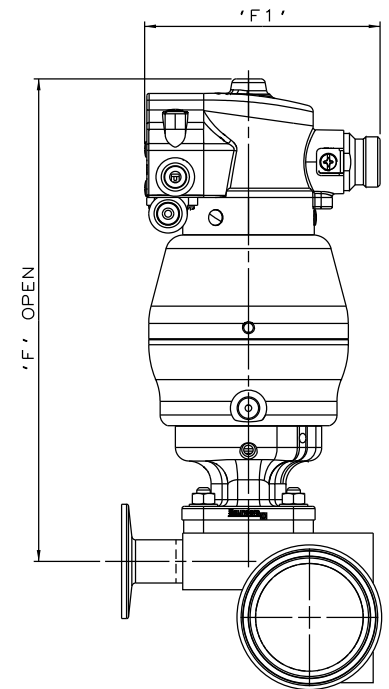
EC ACTUATOR
(ALL MODES)



*S360 ACTUATOR



*S360 ACTUATOR
WITH I-VUE SENSOR



*S360 ACTUATOR
WITH M-VUE SENSOR

The information on this sheet is Private and Confidential and is the property of Crane Process Flow Technologies Limited and must not be published directly or indirectly in any manner whatsoever without the written permission of the Company and must not be used in any way detrimental to their interests.
© Crane Process Flow Technologies

CRANE	Process Flow Technologies	Saunders The Science Inside
	A Crane Co. Company	

Title
SCHEDULE OF LEADING DIMENSIONS FOR DN20/0.75 WEIR
'T' BODY (DN20/0.75 BRANCH) WITH
HYGIENIC CLAMP ENDS WITH ISO 1127 S1 BORE.
FITTED WITH TOPWORKS OPTIONS

Drawn	RI	Date	09.05.17	UNCONTROLLED IN HARD COPY FORMAT
Checked	RND	Date	09.05.17	
First Angle Projection Method E		DO NOT SCALE	Drawing No. WEB-123-ASSY	Issue. 1

* DIMENSIONS SHOW MAXIMUM ENVELOPE FOR ALL MODES

BRANCH SIZE	A		A1		B		B1		C		C1		D		D1		E		E1		F		F1		
	mm	inch	mm	inch	mm	inch	mm	inch	mm	inch	mm	inch	mm	inch	mm	inch	mm	inch	mm	inch	mm	inch	mm	inch	
DN20	0.75	91.5	3.60	62.0	2.44	117.5	4.63	62.0	2.44	160.5	6.32	103.0	4.05	167.5	6.59	98.0	3.87	263.5	10.37	136.0	5.35	228.5	9.00	103.8	4.09